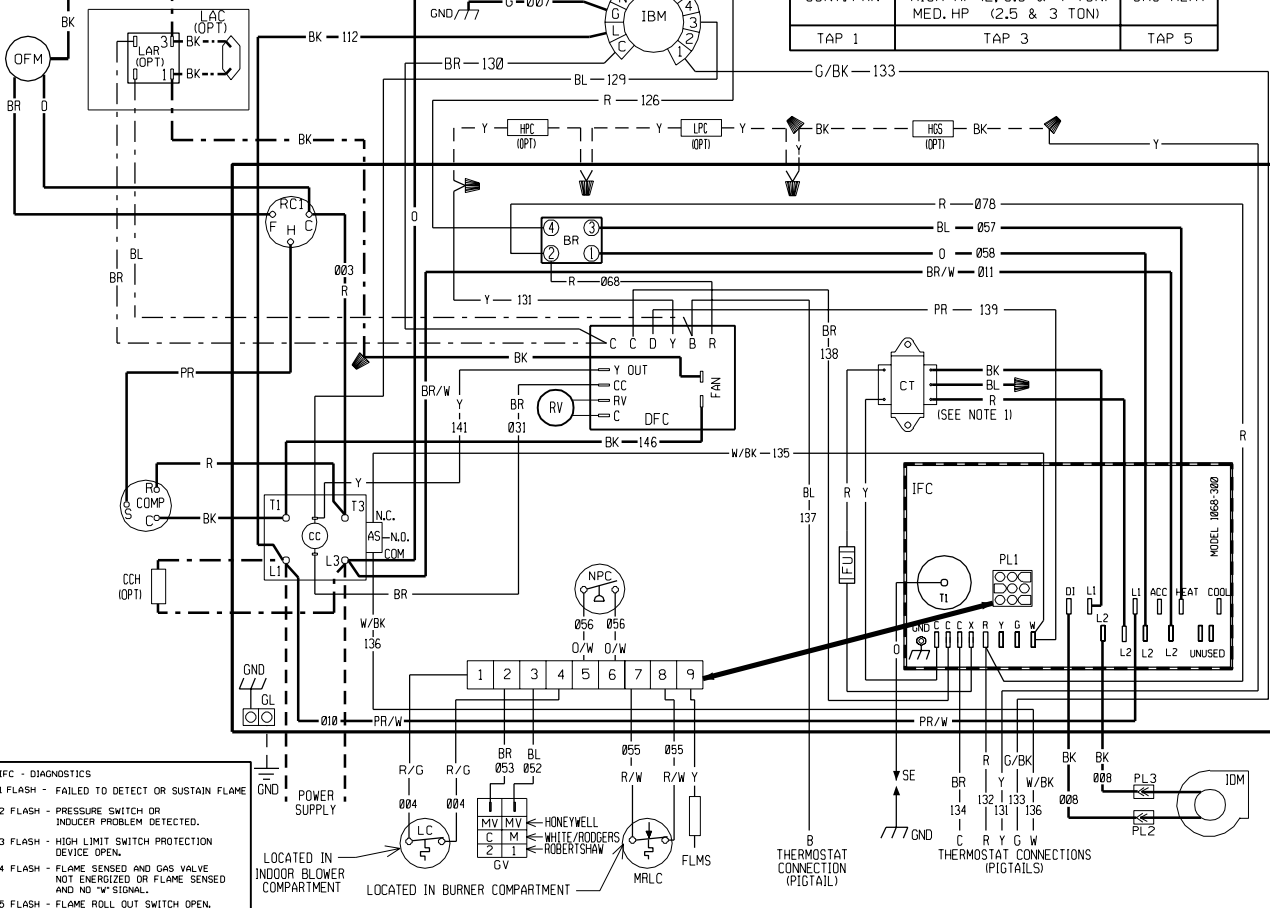


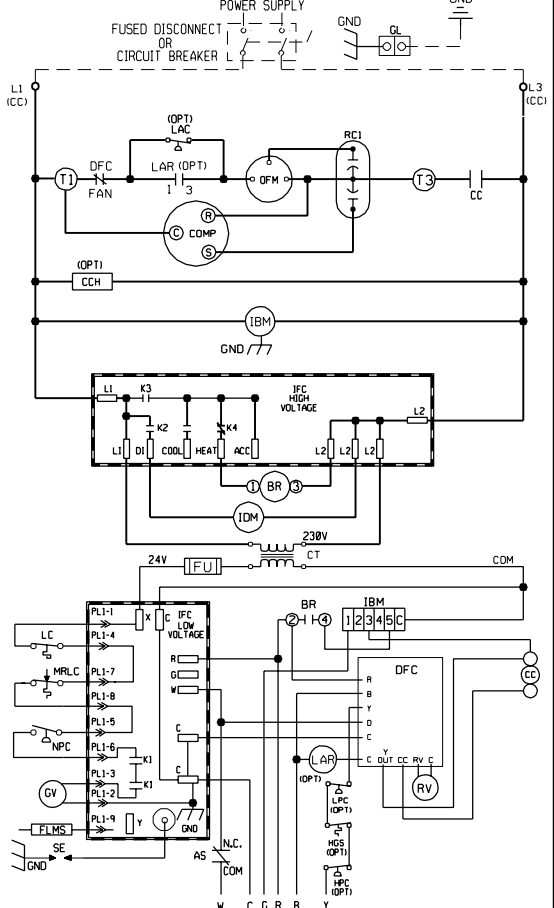
### WIRING DIAGRAM



### FACTORY BLOWER SPEEDS

CONT. FAN	HIGH HP (2, 3.5 & 4 TON)	GAS HEAT
TAP 1	TAP 3	TAP 5

### WIRING SCHEMATIC



- IFC - DIAGNOSTICS**
- FLASH - FAILED TO DETECT OR SUSTAIN FLAME
  - FLASH - PRESSURE SWITCH OR INDUCER PROBLEM DETECTED.
  - FLASH - HIGH LIMIT SWITCH PROTECTION DEVICE OPEN.
  - FLASH - FLAME SENSED AND GAS VALVE NOT ENERGIZED OR FLAME SENSED AND "W" SIGNAL.
  - FLASH - FLAME ROLL OUT SWITCH OPEN.

POWER SUPPLY  
LOCATED IN INDOOR BLOWER COMPARTMENT

LOCATED IN BURNER COMPARTMENT

8 THERMOSTAT CONNECTION (PIGTAIL)

**COMPONENT CODE**

AS	AUXILIARY SWITCH	LAC	LOW AMBIENT COOLING CONTROL
BR	BLOWER RELAY	LAR	LOW AMBIENT RELAY
CC	COMPRESSOR CONTACTOR	LC	LIMIT CONTROL
CCH	CRANKCASE HEATER	LPC	LOW PRESSURE CONTROL
COMP	COMPRESSOR	MRLC	MAN. RESET LIMIT CONTROL
CT	CONTROL TRANSFORMER	NPC	NEG. PRESSURE CONTROL
DFC	DEFROST CONTROL	ONB	ON BOARD DIAGNOSTICS
FLMS	FLAME SENSOR	OFM	OUTDOOR FAN MOTOR
FU	FUSE	OPT	OPTIONAL
GL	GROUND LUG	PL	PLUG
GND	GROUND	RC	RUN CAPACITOR
GV	GAS VALVE	RV	REVERSING VALVE
HPC	HIGH PRESSURE CONTROL	SC	START CAPACITOR
IBM	INDOOR BLOWER MOTOR	SE	SPARK ELECTRODE
IDM	INDUCED DRAFT MOTOR	SR	START RELAY
IFC	INTEGRATED FURNACE CONTROL	TDC	TIME DELAY CONTROL
HCS	HOT GAS SENSOR		WIRE NUT

**NOTES:**

- MAIN UNIT TRANSFORMER PRIMARY LEADS: 60 HZ. RED-COMMON BLUE-208 V BLACK-230 V INTERCHANGE BLACK & BLUE LEADS FOR 208 V TRANSFORMER OPERATION.
- MOTORS & COMPRESSOR THERMALLY PROTECTED. 3. CONNECTORS SUITABLE FOR USE WITH COPPER CONDUCTORS ONLY.
- CONNECT FIELD WIRING IN GROUNDED RAIN-TIGHT CONDUIT TO 60 HZ FUSED DISCONNECT.
- LOW VOLTAGE CIRCUIT IS N.E.C. CLASS 2 WITH A CLASS 2 TRANSFORMER 24 VOLT, 50/60 HERTZ SUPPLIED.
- REPLACEMENT FUSES MUST BE SAME TYPE & SIZE AS ORIGINAL.

**WIRING INFORMATION**

LINE VOLTAGE

- FACTORY STANDARD
- FACTORY OPTION
- FIELD INSTALLED

LOW VOLTAGE

- FACTORY STANDARD
- FACTORY OPTION
- FIELD INSTALLED

REPLACEMENT WIRE

- MUST BE THE SAME SIZE AND TYPE OF INSULATION AS ORIGINAL (105 C° MIN.)

WARNING

- CABINET MUST BE PERMANENTLY GROUNDED AND CONFORM TO I.E.C., N.E.C., C.E.C. AND LOCAL CODES AS APPLICABLE.

**WIRE COLOR CODE**

BK	BLACK	GY	GRAY	R	RED
BR	BROWN	O	ORANGE	W	WHITE
BL	BLUE	PK	PINK	Y	YELLOW
G	GREEN	PR	PURPLE		

**ELECTRICAL WIRING DIAGRAM**

DUAL FUEL PACKAGE UNIT WITH INTEGRATED FURNACE CONTROL 208/230V, 1 - PHASE

DR. BY MCB    APP. BY    DATE 11-3-05    DWG. NO. 90-23621-18    REV 03

90-23621-18 REV 03