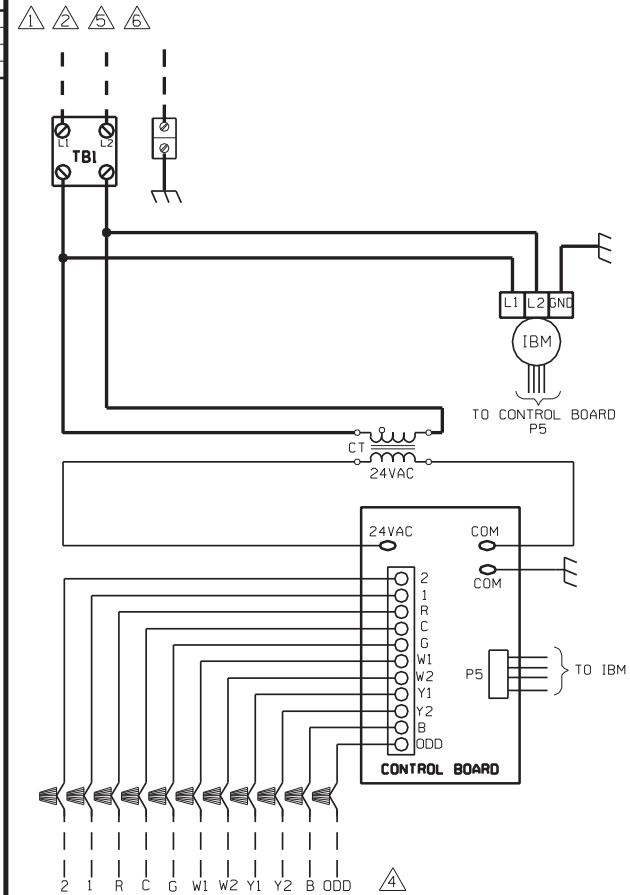
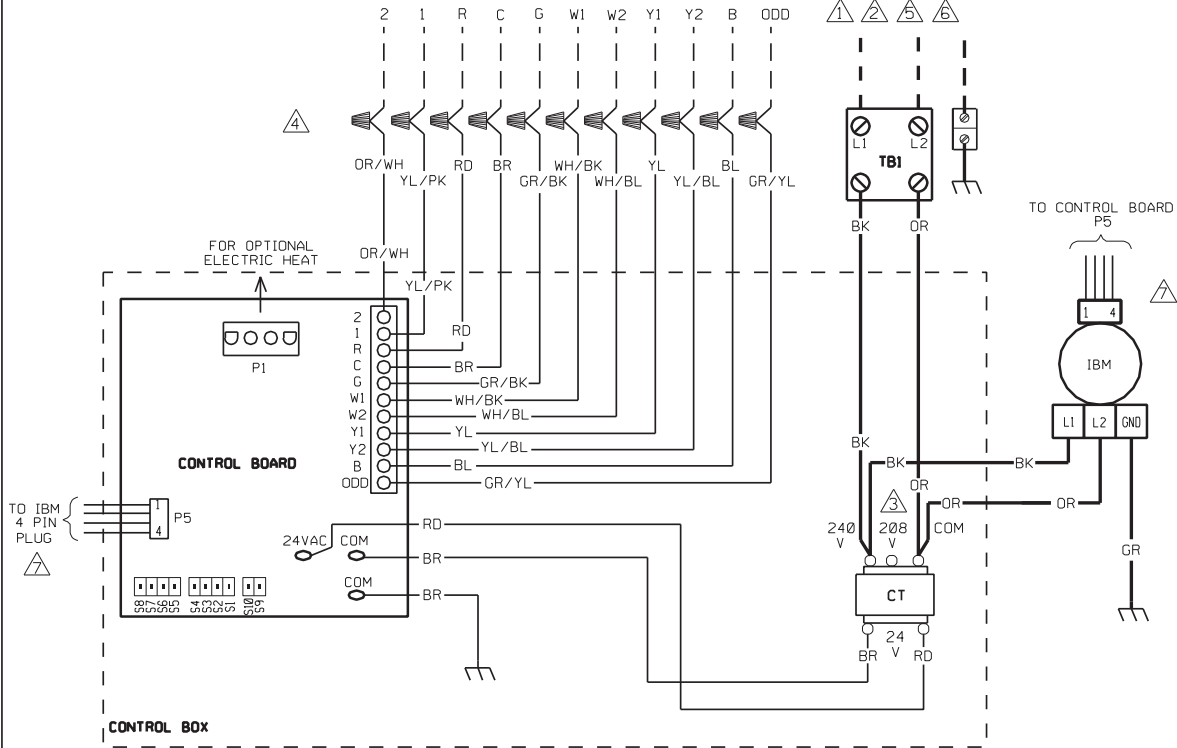


# WIRING DIAGRAM

4 PIN CONNECTOR	
PIN NO.	WIRE COLOR
1	RD
2	YL/PK
3	OR/WH
4	BR

# SCHEMATIC DIAGRAM



## COMPONENT CODE

CT	CONTROL TRANSFORMER
GND	GROUND
IBM	INDOOR BLOWER MOTOR
TB	TERMINAL BLOCK (HI VOLT)
▲	WIRE NUT

## NOTES:

- ▲ CONNECT SUPPLY WIRING FOR VOLTAGE, PHASE AND HERTZ SHOWN ON RATING PLATE.
- ▲ SUPPLY WIRE MUST BE RATED AT 75° C MIN. SEE INSTRUCTIONS FOR SIZE.
- ▲ CT FACTORY WIRED FOR 240 VOLTS. MOVE WIRES FROM 240V TO 208V FOR 208V OPERATION.
- ▲ CONTROL WIRING TO THERMOSTAT.
- ▲ FOR USE WITH COPPER CONDUCTORS ONLY.
- ▲ WHEN HEATER KIT IS INSTALLED, POWER IS APPLIED TO HEATER KIT DISCONNECT OR TERMINAL BLOCK. WIRES ARE PROVIDED IN HEATER KIT TO CONNECT TO TB1. WITHOUT ELECTRIC HEAT, FIELD POWER WIRES ARE ATTACHED TO TB1.
- ▲ SEE CHART FOR WIRE COLORS.

## WIRING INFORMATION

- LINE VOLTAGE
- FACTORY STANDARD
  - FACTORY OPTION
  - FIELD INSTALLED
- LOW VOLTAGE
- FACTORY STANDARD
  - FACTORY OPTION
  - FIELD INSTALLED
- REPLACEMENT WIRE
- MUST BE THE SAME SIZE AND TYPE OF INSULATION AS ORIGINAL (105 C\*MIN.)
- WARNING
- CABINET MUST BE PERMANENTLY GROUNDED AND CONFORM TO I.E.C., N.E.C., C.E.C. AND LOCAL CODES AS APPLICABLE.

## WIRE COLOR CODE

BK	BLACK	OR	ORANGE
BR	BROWN	PR	PURPLE
BL	BLUE	RD	RED
GR	GREEN	WH	WHITE
GY	GRAY	YL	YELLOW

## ELECTRICAL WIRING DIAGRAM

ELECTRIC AIR HANDLER  
COMMUNICATING  
ECM MOTOR

DR. BY	APP. BY	DATE	DWG. NO.	REV
MGR		9-14-07	90-102638-01	00

DWG. NO. 90-102638-01 REV 00